

INPPCS-125/0.4-W-14-A2-OS

Product Specification

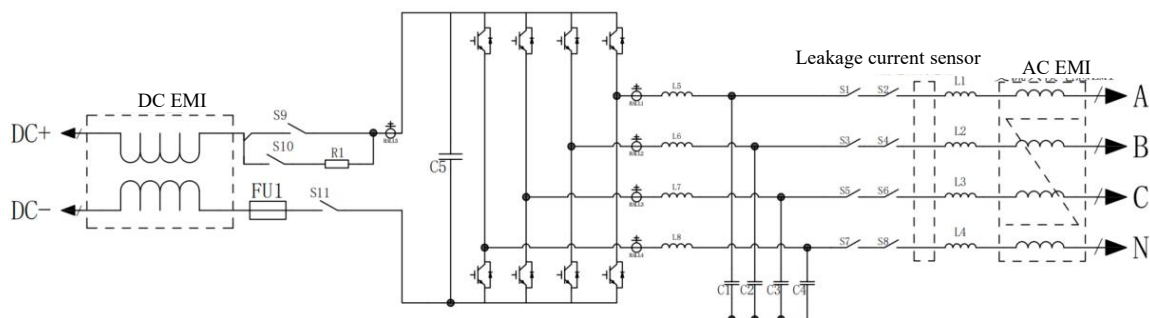
Beijing IN-POWER Electric Co., Ltd.

125 kW PCS-OS Product Specification



1 Product Features

- a) It supports a wider DC voltage range, from 600 to 1,000V, and may adapt to different battery system configurations;
- b) Compared with the traditional IGBT system, the SIC power device has higher efficiency and lower loss, and is conducive to improving project profitability for industrial and commercial users;
- c) Technical features: three-phase four-leg, hardware architecture to maintain IN-POWER's characteristics;
- d) High efficiency, up to 99%;
- e) Multi-machine grid-disconnected parallel capability;
- f) The AC side is provided with dual protection for insulation monitoring and leakage current, while the DC side has double contactors and fuses;
- g) High power density, small product size, conducive to installation in customer's cabinet;
- h) Built-in EMI, no external filters required;



2 Product Introduction

2.1 Technical parameters

| | | |
|---|--|---|
| Model | INPPCS-125/0.4-W-14-A2-OS | |
| DC Side Parameters | | |
| DC voltage range | DC600V~1000V | Full - load voltage: DC630V-950V; limited load voltage: DC600V-630V,DC950V-1000V |
| Full-load voltage range | DC630V~950V | |
| Rated DC current | 198A | |
| Rated DC power | 125kW | |
| AC Grid-connected Parameters | | |
| Rated AC power | 125kW | |
| Overload capacity | 1.1 times | Ambient temperature $\leq 40^{\circ}\text{C}$ |
| Rated voltage | AC400V | |
| Rated AC current | 180A | |
| AC access method | Three-phase four-wire | |
| Grid voltage range | 400V (-15%~+15%) | |
| Grid frequency range | 50Hz/60Hz $\pm 2.5\text{Hz}$ | |
| Total harmonic distortion rate of current | $\leq 3\%$ (full load) | |
| Power factor | 0.99/-1~1 | |
| Current DC component | $\leq 0.5\%$ | |
| Charge and discharge conversion time | $< 100\text{ms}$ | |
| AC Grid-disconnected Parameters | | |
| AC grid-disconnected voltage | AC400V | |
| AC voltage range | AC400V $\pm 3\%$ | |
| AC grid-disconnected frequency | 50Hz/60Hz | |
| Grid-disconnected output THDU | $\leq 3\%$ (linear load) | |
| Unbalanced load capacity | 100% | |
| Other Parameters | | |
| Maximum conversion efficiency | $\geq 99\%$ | |
| Allowable ambient temperature | $-30^{\circ}\text{C}\sim 50^{\circ}\text{C}$ | Full - load |
| Allowable relative humidity | $\leq 95\%$ | No condensation |

| | | |
|-----------------------------|---|-------------------------|
| Noise | ≤75dB | |
| Protection grade | IP20 | |
| Altitude | 3000 m | ≥2000m for limited load |
| Size | W520mm×H240mm×D680mm | |
| Weight | ≤70KG | |
| Cooling method | Forced air cooling | |
| Wiring, air-out direction | Primary or secondary at the front, air-in from front, air-out from rear | One wiring mode |
| BMS communication interface | CAN or 485 | |
| EMS communication interface | Network interface or 485 | |

2.2 Product size

The handle is only used for pushing and pulling, and is not load-bearing

